



**macLaughlin and co**

# Industrial Space For Lease

5401-5451 Warehouse Way Sacramento, CA



**Small Units Available**

**See Agent for Rent**

## We are pleased to offer the following space:

- ⇒ Located off 23rd Avenue and Florin-Perkins Road, just South of Folsom Boulevard
- ⇒ 10 x 12' Grade Level Doors
- ⇒ Available Power: 100 Amps, 120/208 V
- ⇒ 14-16' Clear Height
- ⇒ Turnkey Ready units
- ⇒ New Exterior LED Lighting
- ⇒ Skylights
- ⇒ Insulated Warehouse
- ⇒ Private Restrooms
- ⇒ Monitored Fire Sprinkler Systems



**Mackenzie Sickle 916.374.4223 [msickle@macco.org](mailto:msickle@macco.org) Lic #02034249**

**Louis MacLaughlin 916.374.4235 [louiemac@macco.org](mailto:louiemac@macco.org) Lic #02121706**

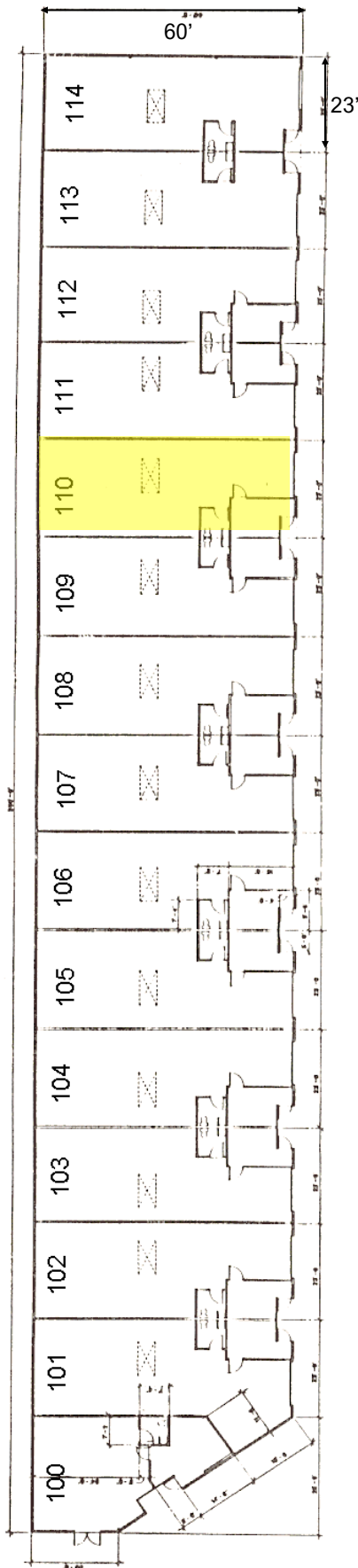
**1401 Shore Street, West Sacramento, CA 95691 T 916.371.9021**



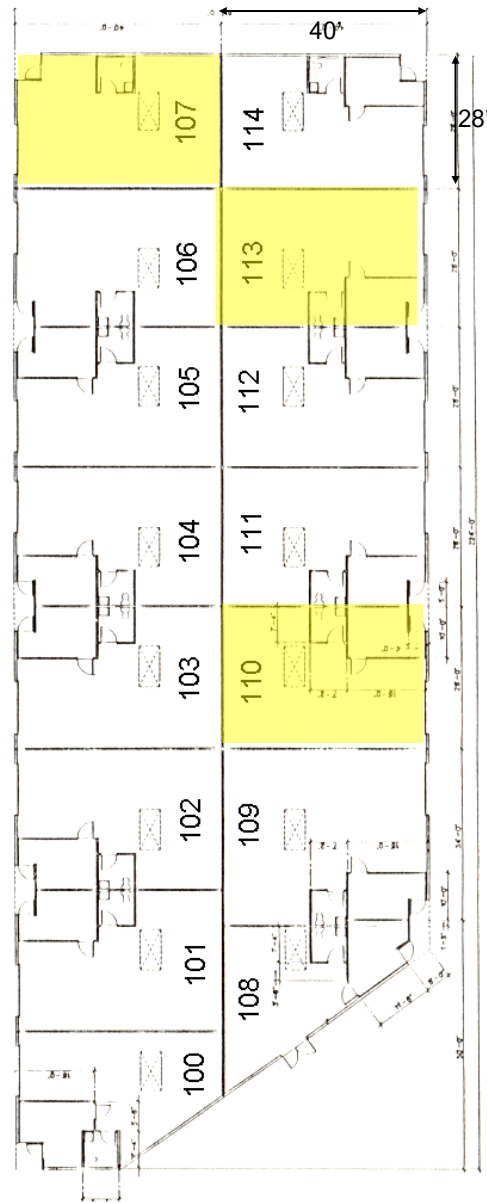
**VIDEO TOUR**

[www.macco.org](http://www.macco.org)

The information contained herein has been carefully checked and to the best of our knowledge is correct but we assume no liability for representations as to values or for errors or omissions in this statement. Client should carefully verify the above items of income and expenses and all other information contained herein.



FLOOR PLAN - 5401 WAREHOUSE WAY



FLOOR PLAN - 5451 WAREHOUSE WAY

Address	Suite	Size Available	Notes
5401 Warehouse	110	1,380 SF	Available May 1, 2024
5451 Warehouse	107	1,120 SF	Available June 1, 2024
5451 Warehouse	110	1,120 SF	Available May 1, 2024
5451 Warehouse	113	1,120 SF	Available Now, Move-in Ready



# Aerial

